

# Site Accessibility Evaluation



## **DOT Operations Center**

**3275 Akers Dr  
Colorado Springs, CO  
80922**

**ADA Only**

***Inspection Date: 09/27/2016  
Inspector: David Mejia***

**Prepared By**



**(719) 520 - 6866  
[www.elpasoco.com](http://www.elpasoco.com)**

## Parking

### Finding: 1

The accessible parking is not located on an accessible route of travel to the accessible building entrance.

Accessible parking spaces serving a particular building shall be located on the shortest accessible route of travel from adjacent parking to an accessible entrance. In buildings with multiple accessible entrances with adjacent parking, accessible parking spaces shall be dispersed and located closest to the accessible entrances.

2010 ADAS Section 208.3.1

Parking spaces complying with 502 that serve a particular building or facility shall be located on the shortest accessible route from parking to an entrance complying with 206.4. Where parking serves more than one accessible entrance, parking spaces complying with 502 shall be dispersed and located on the shortest accessible route to the accessible entrances. In parking facilities that do not serve a particular building or facility, parking spaces complying with 502 shall be located on the shortest accessible route to an accessible pedestrian entrance of the parking facility.

#### Citation:

2010 ADAS Section: 208.3.1

#### As Built:

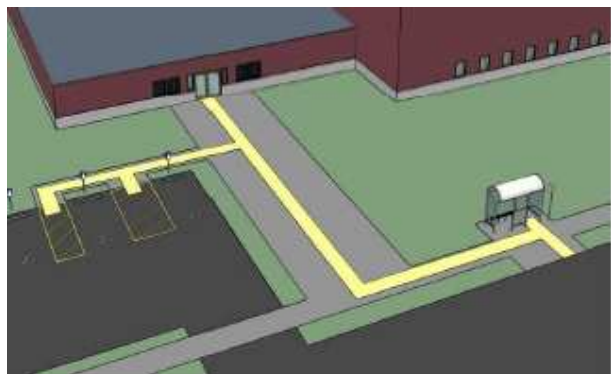
No ped ramp aligned w/aisle

#### Recommendation:

Submit w/o for correction. Area needs to be re-striped and access aisle to sidewalk path of travel needs to align w/accessible ramp.

#### Notes:

Corrective Action: Parking area was repaved to meet seamless transition from access aisle to access route. Corrected 18 Oct 2016.



Finding 19554 Main Photo

**Finding #1 Additional Finding Photos**



**Finding 19554 Additional Photo**

**CORRECTED**

## Sidewalk to entrance

### Finding: 2

The walkway contains abrupt vertical edges and/or variations over a 1/4 inch.

1/4 inch is the maximum vertical rise. Changes in level between 1/4 inch and 1/2 inch must be beveled at 1:2 or less. Changes in level greater than 1/2 inch must be by way of a ramp.

2010 ADAS Section 303.3

Changes in level between 1/4 inch (6.4 mm) high minimum and 1/2 inch (13 mm) high maximum shall be beveled with a slope not steeper than 1:2.

2010 ADAS Section 303.2

Changes in level of 1/4 inch (6.4 mm) high maximum shall be permitted to be vertical.

### Citation:

2010 ADAS Section: 303.3, 303.2

### As Built:

3/4 of an inches upheaval.

### Recommendation:

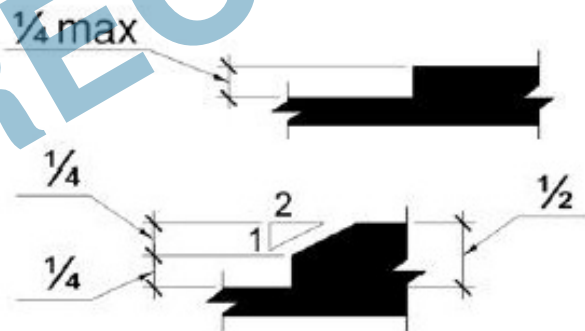
Submit a work order to have sidewalk area shaved.

### Notes:

Corrective Action:



Finding 19562 Main Photo



**Finding #2 Additional Finding Photos**



Finding 19562 Additional Photo

CORRECTED

**Sidewalk to entrance**

**Finding: 3**

**Front door ADA push plate not working**

*2010 ADAS Section Recommended  
None*

**Citation:**

2010 ADAS Section: Recommended

**As Built:**

Front door ADA push plate malfunctioning / inoperable.

**Recommendation:**

Inspect and replace batteries on All ADA push plates.

**Notes:**

Corrective Action: Work order # 403142 submitted for correction. Work order completed on 9/7/17.





## Main Lobby Area

### Finding: 4

Counter not accessible due to fax/printer.

A portion of the counter surface that is 36 inches long minimum and 36 inches high maximum above the finish floor shall be provided. A 30 inch by 48 inch clear floor space on an accessible route must be provided for either a forward or parallel approach. Additionally, if a forward approach is desired, knee and toe space must be provided.

2010 ADAS Section 904.4.2

A portion of the counter surface that is 30 inches (760 mm) long minimum and 36 inches (915 mm) high maximum shall be provided. Knee and toe space complying with 306 shall be provided under the counter. A clear floor or ground space complying with 305 shall be positioned for a forward approach to the counter.

2010 ADAS Section 904.4.1

A portion of the counter surface that is 36 inches (915 mm) long minimum and 36 inches (915 mm) high maximum above the finish floor shall be provided. A clear floor or ground space complying with 305 shall be positioned for a parallel approach adjacent to the 36 inch (915 mm) minimum length of counter.

#### Citation:

2010 ADAS Section: 904.4.2, 904.4.1

#### As Built:

Not accessible due to fax/printer on accessible counter area

#### Recommendation:

Relocate fax/printer in order to clear counter for service.

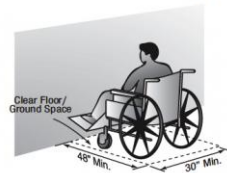
#### Notes:

Corrective Action: Relocated to provide clear counter area on 18 Jan 2017.

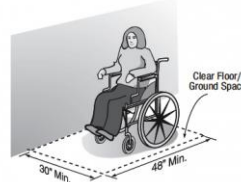


Finding 19555 Main Photo

CLEAR FLOOR SPACE - FORWARD APPROACH



CLEAR FLOOR SPACE - PARALLEL APPROACH



**Finding #4 Additional Finding Photos**



**Finding 19555 Additional Photo**

**CORRECTED**



## Administrative Area Men's Restroom

### Finding: 5

The compartment door is not self closing.

The water closet compartment shall be equipped with a door that has an automatic-closing device.

2010 ADAS Section 604.8.1.2

Toilet compartment doors, including door hardware, shall comply with 404 except that if the approach is to the latch side of the compartment door, clearance between the door side of the compartment and any obstruction shall be 42 inches (1065 mm) minimum. Doors shall be located in the front partition or in the side wall or partition farthest from the water closet. Where located in the front partition, the door opening shall be 4 inches (100 mm) maximum from the side wall or partition farthest from the water closet. Where located in the side wall or partition, the door opening shall be 4 inches (100 mm) maximum from the front partition. The door shall be self-closing. A door pull complying with 404.2.7 shall be placed on both sides of the door near the latch. Toilet compartment doors shall not swing into the minimum required compartment area.

#### Citation:

2010 ADAS Section: 604.8.1.2

#### As Built:

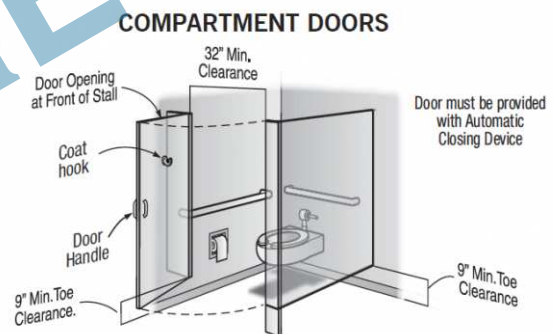
Door closer not working.

#### Recommendation:

Submit a work order to have door self-closer installed.

#### Notes:

Corrective Action: W/O 381195 submitted.



Finding 27939 Main Photo

## Administrative Area Men's Restroom

### Finding: 6

The water closet compartment door is missing a loop handle.

Water closet compartments must be equipped with a door that has a loop or U-shaped handle on both sides of the door immediately below the latch. The latch must be flip-over style, sliding or other hardware not requiring the user to grasp or twist.

2010 ADAS Section 604.8.1.2

Toilet compartment doors, including door hardware, shall comply with 404 except that if the approach is to the latch side of the compartment door, clearance between the door side of the compartment and any obstruction shall be 42 inches (1065 mm) minimum. Doors shall be located in the front partition or in the side wall or partition farthest from the water closet. Where located in the front partition, the door opening shall be 4 inches (100 mm) maximum from the side wall or partition farthest from the water closet. Where located in the side wall or partition, the door opening shall be 4 inches (100 mm) maximum from the front partition. The door shall be self-closing. A door pull complying with 404.2.7 shall be placed on both sides of the door near the latch. Toilet compartment doors shall not swing into the minimum required compartment area.

#### Citation:

2010 ADAS Section: 604.8.1.2

#### As Built:

No loop handle available on inside of door.

#### Recommendation:

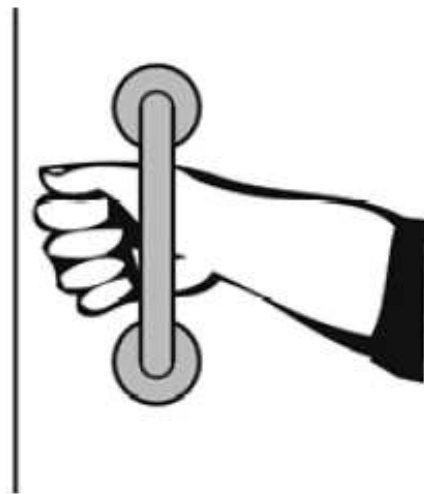
Submit a work order to have loop handle installed.

#### Notes:

Corrective Action: W/O 381194 submitted. Installed loop handles on inside/outside of stall door-completed 3/10/2017.



Finding 27940 Main Photo



## Administrative Area Men's Restroom

### Finding: 7

The flush handle is located on the wrong side of the toilet.

Controls shall be operable with one hand and shall not require tight grasping, pinching or twisting. Controls for the flush valves shall be mounted on the wide side of toilet areas, no more than 44 inches above the floor.

**Citation:**

**As Built:**

Flush handle located on closed side.

**Recommendation:**

Submit a work order to have flush handle moved to open side of toilet.

**Notes:**

Corrective Action: W/O 381193 submitted. Installed new sensor type flush valve 3/14/2017.



Finding 27941 Main Photo

## Administrative Area Men's Restroom

### Finding: 8

The grab bar is not spaced correctly to the wall or other elements.

The space between the wall and the grab bar shall be 1 1/2 inches. Adjacent elements shall be positioned to provide unobstructed use of grab bars. The space between the grab bar and projecting objects below and at the ends shall be 1-1/2 inches minimum. The space between the grab bar and projecting objects above shall be 12 inches minimum.

2010 ADAS Section 609.3

The space between the wall and the grab bar shall be 1 1/2 inches (38 mm). The space between the grab bar and projecting objects below and at the ends shall be 1 1/2 inches (38 mm) minimum. The space between the grab bar and projecting objects above shall be 12 inches (305 mm) minimum.

#### Citation:

2010 ADAS Section: 609.3

#### As Built:

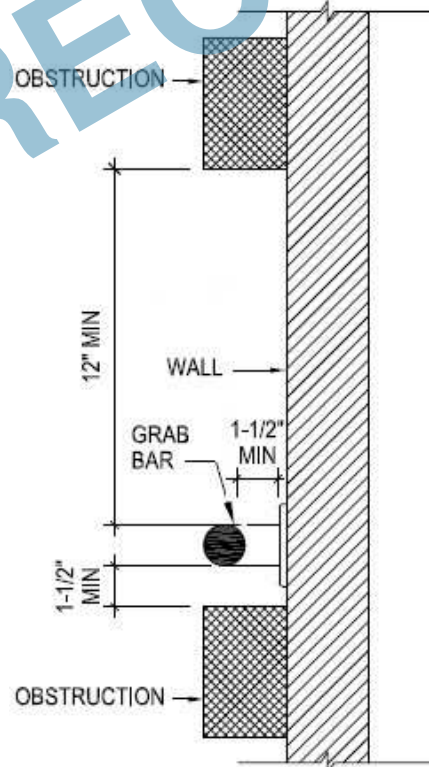
8-1/2 inches

#### Recommendation:

Submit a work order to have toilet seat dispenser moved a minimum of 12 inches from side or rear grab bar.

#### Notes:

Corrective Action: W/O 392073 submitted. Relocated seat cover dispenser-Completed, 3/10/2017.



Finding 27942 Main Photo

## Administrative Area Men's Restroom

### Finding: 9

The door exceeds the maximum pressure to open the door.

Interior doors shall have a maximum opening force of 5 pounds.

These forces do not apply to the force required to retract latch bolts or disengage other devices that hold the door or gate in a closed position. Door closers and gate closers shall be adjusted so that from an open position of 90 degrees, the time required to move the door to a position of 12 degrees from the latch is 5 seconds minimum.

Door and gate spring hinges shall be adjusted so that from the open position of 70 degrees, the door or gate shall move to the closed position in 1.5 seconds minimum.

2010 ADAS Section 404.2.9

Fire doors shall have a minimum opening force allowable by the appropriate administrative authority. The force for pushing or pulling open a door or gate other than fire doors shall be as follows: 1. Interior hinged doors and gates: 5 pounds (22.2 N) maximum. 2. Sliding or folding doors: 5 pounds (22.2 N) maximum. These forces do not apply to the force required to retract latch bolts or disengage other devices that hold the door or gate in a closed position.

#### Citation:

2010 ADAS Section: 404.2.9

#### As Built:

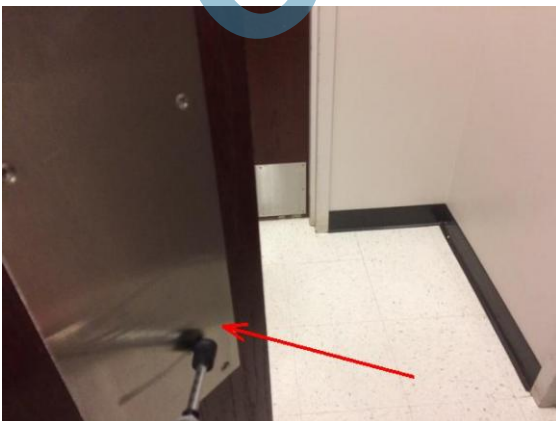
Door from hallway to vestibule and door from vestibule to restroom measured at 9 pounds opening force.

#### Recommendation:

Submitted a w/o to have force adjusted.

#### Notes:

Corrective Action: W/O 386077 submitted 1/26/2017.



Finding 33407 Main Photo



## Administrative Area Men's Restroom

### Finding: 10

The door is equipped with a door closer and returns to a closed position too quickly.

Door closers and gate closers shall be adjusted so that from an open position of 90 degrees, the time required to move the door to a position of 12 degrees from the latch is 5 seconds minimum.

2010 ADAS Section 404.2.8.1

Door closers and gate closers shall be adjusted so that from an open position of 90 degrees, the time required to move the door to a position of 12 degrees from the latch is 5 seconds minimum.

#### Citation:

2010 ADAS Section: 404.2.8.1

#### As Built:

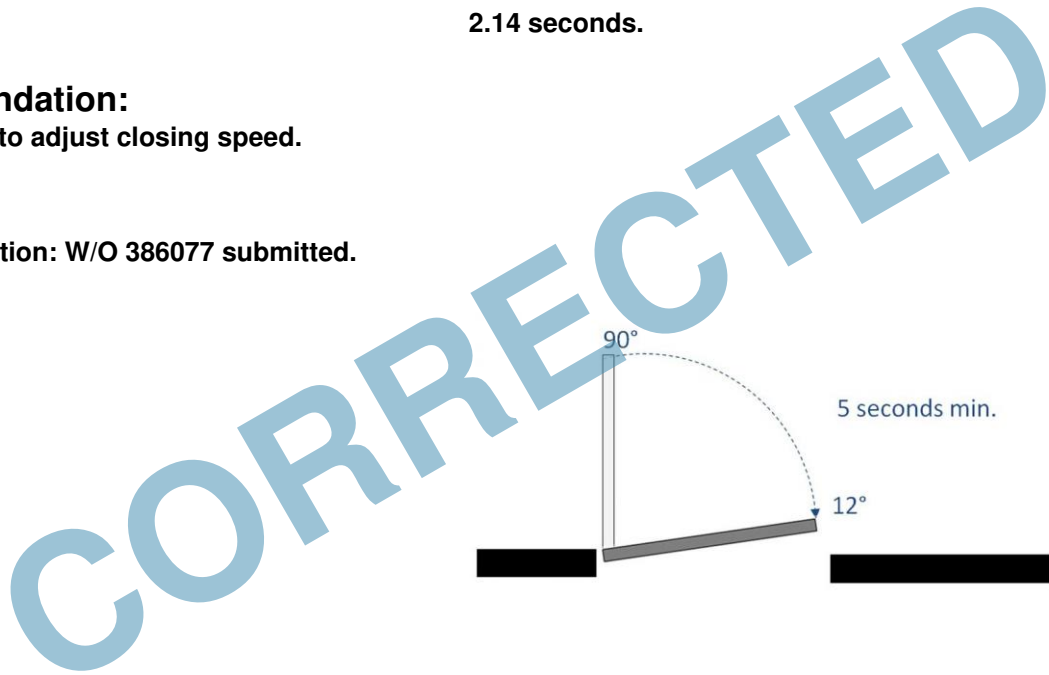
Door from hallway to vestibule closed in 1.38 seconds and door from vestibule to restroom closed in 2.14 seconds.

#### Recommendation:

Submit a w/o to adjust closing speed.

#### Notes:

Corrective Action: W/O 386077 submitted.





## Administrative Area Women's Restroom

### Finding: 11

The compartment door is not self closing.

The water closet compartment shall be equipped with a door that has an automatic-closing device.

2010 ADAS Section 604.8.1.2

Toilet compartment doors, including door hardware, shall comply with 404 except that if the approach is to the latch side of the compartment door, clearance between the door side of the compartment and any obstruction shall be 42 inches (1065 mm) minimum. Doors shall be located in the front partition or in the side wall or partition farthest from the water closet. Where located in the front partition, the door opening shall be 4 inches (100 mm) maximum from the side wall or partition farthest from the water closet. Where located in the side wall or partition, the door opening shall be 4 inches (100 mm) maximum from the front partition. The door shall be self-closing. A door pull complying with 404.2.7 shall be placed on both sides of the door near the latch. Toilet compartment doors shall not swing into the minimum required compartment area.

#### Citation:

2010 ADAS Section: 604.8.1.2

#### As Built:

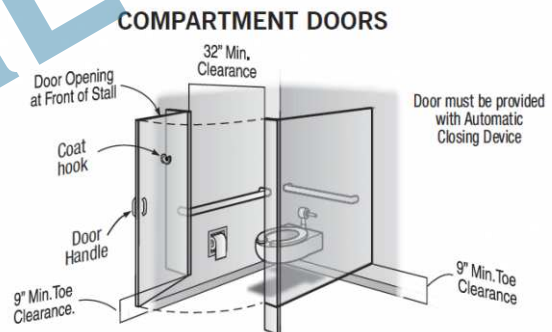
Door closer not working.

#### Recommendation:

Submit a work order to have door self-closer installed.

#### Notes:

Corrective Action: W/O 381190 submitted.



Finding 27944 Main Photo

## Administrative Area Women's Restroom

### Finding: 12

The water closet compartment door is missing a loop handle.

Water closet compartments must be equipped with a door that has a loop or U-shaped handle on both sides of the door immediately below the latch. The latch must be flip-over style, sliding or other hardware not requiring the user to grasp or twist.

2010 ADAS Section 604.8.1.2

Toilet compartment doors, including door hardware, shall comply with 404 except that if the approach is to the latch side of the compartment door, clearance between the door side of the compartment and any obstruction shall be 42 inches (1065 mm) minimum. Doors shall be located in the front partition or in the side wall or partition farthest from the water closet. Where located in the front partition, the door opening shall be 4 inches (100 mm) maximum from the side wall or partition farthest from the water closet. Where located in the side wall or partition, the door opening shall be 4 inches (100 mm) maximum from the front partition. The door shall be self-closing. A door pull complying with 404.2.7 shall be placed on both sides of the door near the latch. Toilet compartment doors shall not swing into the minimum required compartment area.

#### Citation:

2010 ADAS Section: 604.8.1.2

#### As Built:

No loop handle available on inside of door.

#### Recommendation:

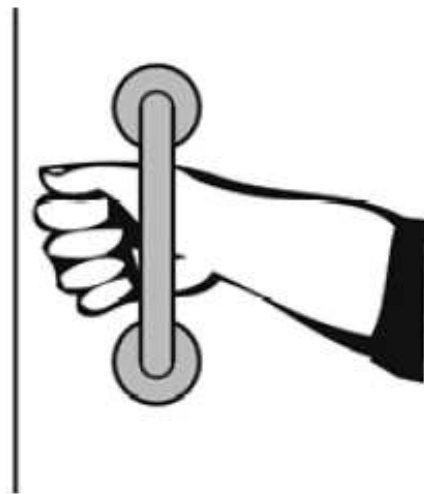
Submit a work order to have loop handle installed.

#### Notes:

Corrective Action: W/O 381188 submitted. Installed loop handles on inside/outside of stall door-completed, 3/10/2017.



Finding 27945 Main Photo



## Administrative Area Women's Restroom

### Finding: 13

The grab bar is not spaced correctly to the wall or other elements.

The space between the wall and the grab bar shall be 1 1/2 inches. Adjacent elements shall be positioned to provide unobstructed use of grab bars. The space between the grab bar and projecting objects below and at the ends shall be 1-1/2 inches minimum. The space between the grab bar and projecting objects above shall be 12 inches minimum.

2010 ADAS Section 609.3

The space between the wall and the grab bar shall be 1 1/2 inches (38 mm). The space between the grab bar and projecting objects below and at the ends shall be 1 1/2 inches (38 mm) minimum. The space between the grab bar and projecting objects above shall be 12 inches (305 mm) minimum.

#### Citation:

2010 ADAS Section: 609.3

#### As Built:

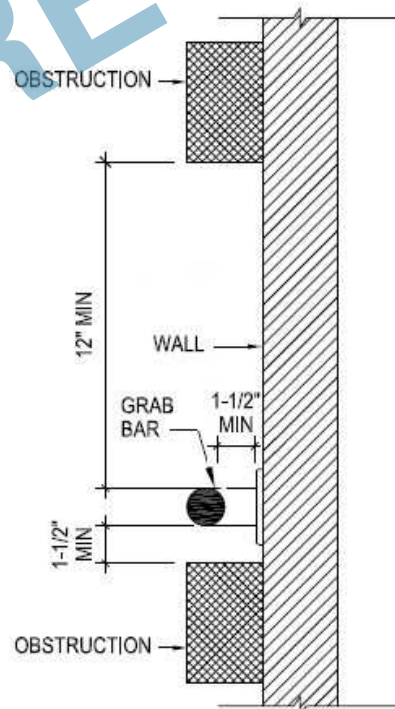
Seat cover dispenser was 3 inches above grab bar.

#### Recommendation:

Submit a work order to have toilet seat dispenser moved a minimum of 12 inches from side or rear grab bar.

#### Notes:

Corrective Action: W/O 392072 submitted. relocated seat cover-completed 3/10/2017.



Finding 27946 Main Photo

## Administrative Area Women's Restroom

### Finding: 14

The door exceeds the maximum pressure to open the door.

Interior doors shall have a maximum opening force of 5 pounds.

These forces do not apply to the force required to retract latch bolts or disengage other devices that hold the door or gate in a closed position. Door closers and gate closers shall be adjusted so that from an open position of 90 degrees, the time required to move the door to a position of 12 degrees from the latch is 5 seconds minimum.

Door and gate spring hinges shall be adjusted so that from the open position of 70 degrees, the door or gate shall move to the closed position in 1.5 seconds minimum.

2010 ADAS Section 404.2.9

Fire doors shall have a minimum opening force allowable by the appropriate administrative authority. The force for pushing or pulling open a door or gate other than fire doors shall be as follows: 1. Interior hinged doors and gates: 5 pounds (22.2 N) maximum. 2. Sliding or folding doors: 5 pounds (22.2 N) maximum. These forces do not apply to the force required to retract latch bolts or disengage other devices that hold the door or gate in a closed position.

#### Citation:

2010 ADAS Section: 404.2.9

#### As Built:

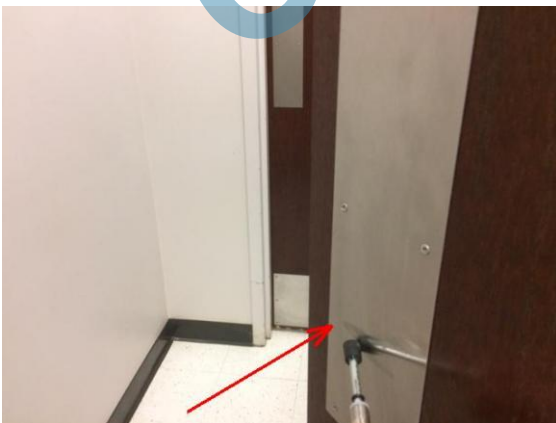
Door from hallway to vestibule and door from vestibule to restroom measured at 9 pounds opening force.

#### Recommendation:

Submitted a w/o to have force adjusted.

#### Notes:

Corrective Action: W/O 386292 submitted. Adjusted closers & arms-completed 3/10/17



Finding 33426 Main Photo



## Administrative Area Women's Restroom

### Finding: 15

The door is equipped with a door closer and returns to a closed position too quickly.

Door closers and gate closers shall be adjusted so that from an open position of 90 degrees, the time required to move the door to a position of 12 degrees from the latch is 5 seconds minimum.

2010 ADAS Section 404.2.8.1

Door closers and gate closers shall be adjusted so that from an open position of 90 degrees, the time required to move the door to a position of 12 degrees from the latch is 5 seconds minimum.

#### Citation:

2010 ADAS Section: 404.2.8.1

#### As Built:

Door from hallway to vestibule closed in 1.51 seconds and door from vestibule to restroom closed in 2.32 seconds.

#### Recommendation:

Submit a w/o to adjust closing speed.

#### Notes:

Corrective Action:

