

Site Accessibility Evaluation

Americans with Disabilities Act Title II (Public Services: State and Local Government)



Centennial Hall

**200 S Cascade Ave
Downtown, CO 80903**

Accessibility Evaluation

Inspection Date: 05/14/2019

Inspector: David Mejia

Prepared By



(719) 520 - 6866

www.elpasoco.com

Main Lobby

Lat: 38.8302700000, Long: -104.8261000000

Finding: 1

There is not enough knee clearance under the drinking fountain.

The drinking fountain must have a clear knee space between the bottom of the drinking fountain and the floor not less than 27 inches in height, 30 inches in width, and 8 inches in depth.

2010 ADAS Section 602.2

Units shall have a clear floor or ground space complying with 305 positioned for a forward approach and centered on the unit. Knee and toe clearance complying with 306 shall be provided.

Citation:

2010 ADAS Section: 602.2

As Built:

Bottom edge of
drinking fountain at
26.5 inches

Budgeting Range:

\$1,500 - \$4,500.00

Recommendation:

Adjust drinking fountain height to provide 27 inches of clearance.

Barrier Priority:

4 (Low): Should be completed as soon as possible due to being a technical violation, but may not result in providing greater access to persons with disabilities. (Includes; Findings that are technically violations but provide a moderate to low increase in accessibility compared to the financial impact on the entity)

Department:

N/A

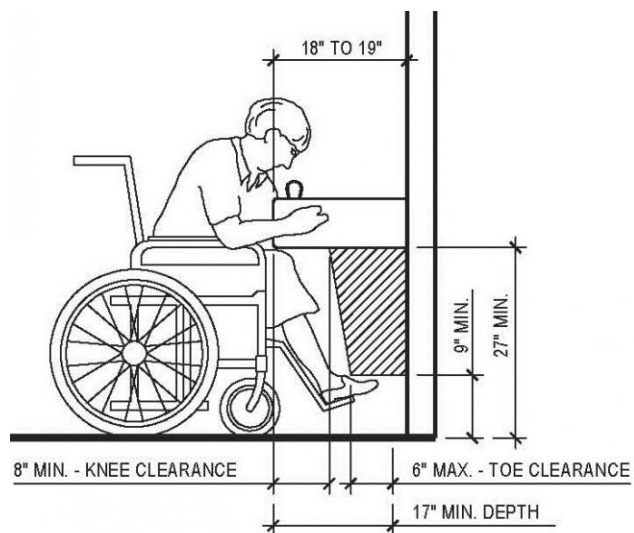
Estimated Remediation Date:

N/A

Notes:

N/A

Finding #1 Continued



Finding 297764 Main Photo

Finding #1 Additional Finding Photos



Finding 297764 Additional Photo

Main Lobby

Lat: 38.8302806000, Long: -104.8263426000

Finding: 2

The water flow from the spout is too low..

The spout shall provide a flow of water 4 inches high minimum.

2010 ADAS Section 602.6

The spout shall provide a flow of water 4 inches (100 mm) high minimum and shall be located 5 inches (125 mm) maximum from the front of the unit. The angle of the water stream shall be measured horizontally relative to the front face of the unit. Where spouts are located less than 3 inches (75 mm) of the front of the unit, the angle of the water stream shall be 30 degrees maximum. Where spouts are located between 3 inches (75 mm) and 5 inches (125 mm) maximum from the front of the unit, the angle of the water stream shall be 15 degrees maximum.

Citation:

2010 ADAS Section: 602.6

As Built:

1.5 inches flow of water

Budgeting Range:

\$150 - \$500.00

Recommendation:

Adjust water flow pressure to provide flow of water 4 inches high minimum.

Barrier Priority:

4 (Low): Should be completed as soon as possible due to being a technical violation, but may not result in providing greater access to persons with disabilities. (Includes; Findings that are technically violations but provide a moderate to low increase in accessibility compared to the financial impact on the entity)

Department:

N/A

Estimated Remediation Date:

N/A

Notes:

N/A

Finding #2 Continued



Finding 297815 Main Photo



Finding #2 Additional Finding Photos



Finding 297815 Additional Photo



Finding 297815 Additional Photo