



# December 2018 Sales and Use Tax

Nikki Simmons, CPA

County Controller, Financial Services Department

February 19, 2019

# Sales & Use Tax Activity December 2018



# Historical Sales Tax Collections

## December 31, 2018

	2007	2016	2017	2018	% Chg '15 to '16	% Chg '16 to '17	% Chg '17 to '18	Cumulative % Chg '07 to '18	Cumulative % Chg '17 to '18
Jan	4,669,476	5,920,910	6,458,104	7,083,743	1.24%	9.07%	9.69%	51.70%	9.69%
Feb	4,780,698	6,051,972	6,775,695	6,835,239	7.87%	11.96%	0.88%	47.29%	5.18%
Mar	5,381,750	6,837,541	7,716,626	7,894,540	2.45%	12.86%	2.31%	47.07%	4.12%
Apr	5,126,774	6,878,794	7,467,587	7,850,635	5.87%	8.56%	5.13%	48.63%	4.39%
May	5,341,924	7,104,053	8,359,966	8,415,492	3.07%	17.68%	0.66%	50.51%	3.54%
Jun	5,982,211	7,944,810	8,745,847	9,352,067	5.54%	10.08%	6.93%	51.62%	4.19%
Jul	5,661,302	7,473,166	8,085,471	8,865,822	0.19%	8.19%	9.65%	52.39%	5.01%
Aug	5,656,019	8,566,046	8,312,125	9,347,632	19.65%	(2.96%)	12.46%	54.10%	6.01%
Sep	5,762,129	8,082,071	8,162,047	8,656,217	10.14%	0.99%	6.05%	53.63%	6.02%
Oct	5,292,976	7,801,905	7,776,025	8,191,778	9.33%	(0.33%)	5.35%	53.75%	5.95%
Nov	5,197,507	7,544,251	7,707,677	8,108,140	13.42%	2.17%	5.20%	53.95%	5.88%
Dec	6,487,768	8,598,076	8,695,005	9,113,352	11.12%	1.13%	4.81%	52.61%	5.78%
<b>Year Total</b>	<b>65,340,533</b>	<b>88,803,593</b>	<b>94,262,175</b>	<b>99,714,656</b>	<b>7.60%</b>	<b>6.15%</b>	<b>5.78%</b>	<b>52.61%</b>	<b>5.78%</b>



# Historical Use Tax on Automobiles

## December 31, 2018

	2007	2016	2017	2018	% Chg '15 to '16	% Chg '16 to '17	% Chg '17 to '18	Cumulative % Chg '07 to '18	Cumulative % Chg '17 to '18
Jan	244,815	361,884	428,149	487,373	11.68%	18.31%	13.83%	99.08%	13.83%
Feb	216,415	315,476	387,566	392,470	22.26%	22.85%	1.27%	90.76%	7.86%
Mar	286,629	398,930	443,818	475,768	14.96%	11.25%	7.20%	81.27%	7.63%
Apr	259,063	456,058	424,690	440,114	29.21%	(6.88%)	3.63%	78.34%	6.62%
May	274,512	388,704	499,154	508,644	6.84%	28.42%	1.90%	79.83%	5.54%
Jun	281,338	432,407	513,919	491,621	12.08%	18.85%	(4.34%)	78.91%	3.66%
Jul	271,907	414,473	380,803	531,469	0.95%	(8.12%)	39.57%	81.36%	8.10%
Aug	322,707	419,949	480,141	489,723	(0.14%)	14.33%	2.00%	76.94%	7.28%
Sep	249,456	472,882	559,553	619,915	18.77%	18.33%	10.79%	84.35%	7.75%
Oct	275,186	563,094	494,953	697,737	40.67%	(12.10%)	40.97%	91.45%	11.32%
Nov	218,546	493,955	410,233	617,842	49.28%	(16.95%)	50.61%	98.33%	14.53%
Dec	176,519	470,407	417,842	596,833	21.00%	(11.17%)	42.84%	106.35%	16.70%
<b>Year Total</b>	<b>3,077,092</b>	<b>5,188,218</b>	<b>5,440,823</b>	<b>6,349,509</b>	<b>18.43%</b>	<b>4.87%</b>	<b>16.70%</b>	<b>106.35%</b>	<b>16.70%</b>



# Historical Use Tax on Building Materials December 31, 2018

	2007	2016	2017	2018	% Chg '15 to '16	% Chg '16 to '17	% Chg '17 to '18	Cumulative % Chg '07 to '18	Cumulative % Chg '17 to '18
Jan	63,661	69,087	49,374	81,116	(12.29%)	(28.53%)	64.29%	27.42%	64.29%
Feb	30,820	52,633	90,516	138,669	3.10%	71.97%	53.20%	132.63%	57.11%
Mar	31,880	40,355	82,829	60,188	(67.33%)	105.25%	(27.33%)	121.57%	25.71%
Apr	71,747	173,395	126,137	161,443	108.68%	(27.25%)	27.99%	122.82%	26.53%
May	48,055	226,334	84,210	376,818	284.87%	(62.79%)	347.47%	232.40%	88.94%
Jun	58,416	84,858	81,141	172,001	(4.83%)	(4.38%)	111.98%	225.12%	92.58%
Jul	60,108	79,814	103,536	180,271	(61.47%)	29.72%	74.11%	220.96%	89.48%
Aug	64,075	95,563	323,413	114,122	6.08%	238.43%	(64.71%)	199.61%	36.49%
Sep	54,510	244,047	71,049	136,139	374.47%	(70.89%)	91.61%	193.99%	40.36%
Oct	80,458	302,013	94,928	271,308	388.30%	(68.57%)	185.80%	200.16%	52.83%
Nov	52,344	107,098	217,249	(1,434)	(13.35%)	102.85%	(100.66%)	174.42%	27.66%
Dec	38,112	71,827	115,557	94,410	9.80%	60.88%	(18.30%)	172.87%	23.97%
<b>Year Total</b>	<b>654,185</b>	<b>1,547,025</b>	<b>1,439,937</b>	<b>1,785,050</b>	<b>42.73%</b>	<b>(6.92%)</b>	<b>23.97%</b>	<b>172.87%</b>	<b>23.97%</b>



# Historical Sales & Use Tax (all components) December 2018

	2007	2016	2017	2018	% Chg '14 to '15	% Chg '15 to '16	% Chg '16 to '17	% Chg '17 to '18	Cumulative % Chg '07 to '18	Cumulative % Chg '17 to '18
Jan	4,977,952	6,351,881	6,935,627	7,652,231	10.24%	1.61%	9.19%	10.33%	53.72%	10.33%
Feb	5,027,933	6,420,081	7,253,777	7,366,378	1.11%	8.46%	12.99%	1.55%	50.10%	5.84%
Mar	5,700,258	7,276,825	8,243,273	8,430,496	7.45%	1.85%	13.28%	2.27%	49.30%	4.53%
Apr	5,457,584	7,508,247	8,018,413	8,452,191	7.75%	8.29%	6.79%	5.41%	50.74%	4.76%
May	5,664,491	7,719,092	8,943,331	9,300,954	2.28%	5.53%	15.86%	4.00%	53.58%	4.59%
Jun	6,321,965	8,462,075	9,340,908	10,015,689	8.18%	5.74%	10.39%	7.22%	54.50%	5.09%
Jul	5,993,317	7,967,453	8,569,811	9,577,563	9.51%	(1.35%)	7.56%	11.76%	55.31%	6.09%
Aug	6,042,801	9,081,558	9,115,679	9,951,477	3.78%	18.40%	0.38%	9.17%	56.57%	6.51%
Sep	6,066,094	8,799,000	8,792,649	9,412,271	9.57%	12.99%	(0.07%)	7.05%	56.40%	6.58%
Oct	5,648,619	8,667,012	8,365,906	9,160,822	10.62%	14.07%	(3.47%)	9.50%	56.97%	6.87%
Nov	5,468,396	8,145,304	8,335,159	8,724,549	3.12%	14.62%	2.33%	4.67%	57.20%	6.67%
Dec	6,702,399	9,140,309	9,228,404	9,804,594	5.21%	11.58%	0.96%	6.24%	56.14%	6.63%
<b>Year Total</b>	<b>69,071,810</b>	<b>95,538,836</b>	<b>101,142,936</b>	<b>107,849,215</b>	<b>6.56%</b>	<b>8.57%</b>	<b>5.87%</b>	<b>6.63%</b>	<b>56.14%</b>	<b>6.63%</b>



# Sales & Use Tax (all components)

## Budget to Actual December 2018

	<b>Budget</b>	<b>Actual</b>	<b>\$ Chg Budget to Actual</b>	<b>% Chg Budget to Actual</b>	<b>Cumulative % Chg</b>
<b>Jan</b>	7,492,184	7,652,231	160,047	2.14%	2.14%
<b>Feb</b>	7,459,983	7,366,378	(93,604)	(1.25%)	0.44%
<b>Mar</b>	8,726,570	8,430,496	(296,074)	(3.39%)	(0.97%)
<b>Apr</b>	8,479,693	8,452,191	(27,501)	(0.32%)	(0.80%)
<b>May</b>	9,209,590	9,300,954	91,364	0.99%	(0.40%)
<b>Jun</b>	9,842,884	10,015,689	172,805	1.76%	0.01%
<b>Jul</b>	9,477,935	9,577,563	99,627	1.05%	0.18%
<b>Aug</b>	9,510,136	9,951,477	441,341	4.64%	0.78%
<b>Sep</b>	9,413,532	9,412,271	(1,262)	(0.01%)	0.69%
<b>Oct</b>	9,070,051	9,160,822	90,771	1.00%	0.72%
<b>Nov</b>	8,758,771	8,724,549	(34,223)	(0.39%)	0.62%
<b>Dec</b>	9,896,553	9,804,594	(91,959)	(0.93%)	0.48%
	<b>107,337,883</b>	<b>107,849,215</b>	<b>511,332</b>		<b>0.48%</b>



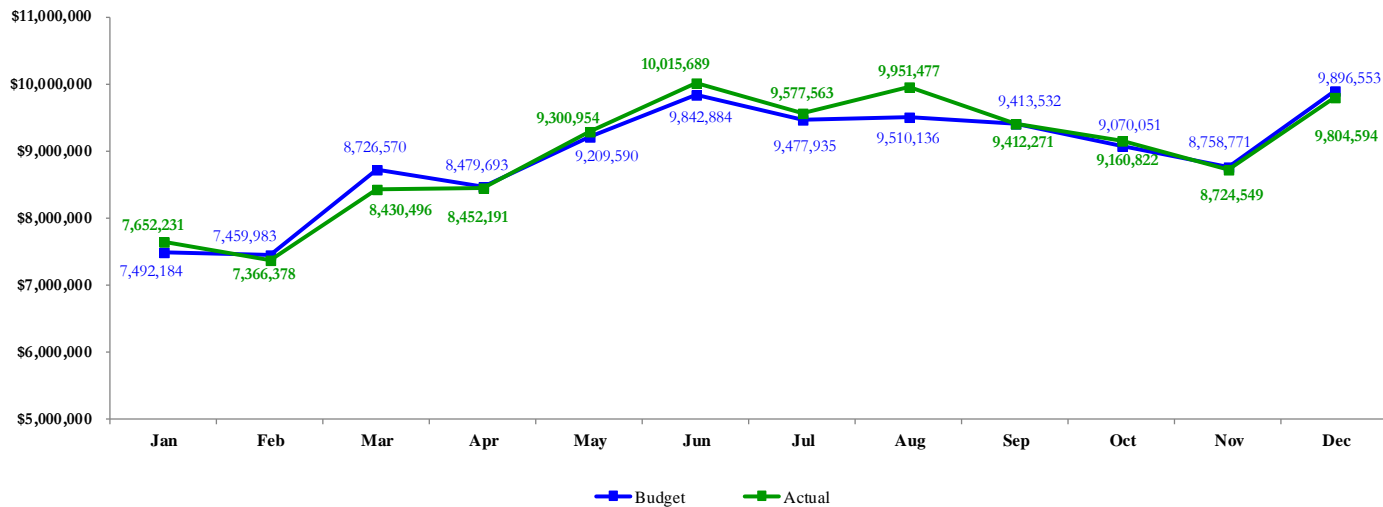
# Combined Sales & Use Tax for Construction December 31, 2018

	2007	2016	2017	2018	% Chg '15 to '16	% Chg '16 to '17	% Chg '17 to '18	Cumulative % Chg '07 to '18	Cumulative % Chg '17 to '18
Jan	122,993	169,774	182,387	215,257	(3.61%)	7.43%	18.02%	75.02%	18.02%
Feb	125,469	160,830	290,026	267,981	20.47%	80.33%	(7.60%)	94.49%	2.29%
Mar	119,807	203,701	351,731	210,329	(12.72%)	72.67%	(40.20%)	88.33%	(15.84%)
Apr	152,344	309,530	346,311	327,856	42.93%	11.88%	(5.33%)	96.20%	(12.73%)
May	122,561	361,131	293,271	559,842	87.79%	(18.79%)	90.90%	145.85%	8.03%
Jun	177,741	269,097	479,303	365,537	(8.46%)	78.12%	(23.74%)	137.15%	0.19%
Jul	154,363	258,247	294,510	386,123	(38.14%)	14.04%	31.11%	139.21%	4.26%
Aug	153,645	290,215	509,101	334,943	14.50%	75.42%	(34.21%)	136.32%	(2.87%)
Sep	135,716	471,609	239,343	307,774	106.77%	(49.25%)	28.59%	135.30%	(0.35%)
Oct	158,728	554,549	291,326	537,704	161.01%	(47.47%)	84.57%	146.83%	7.20%
Nov	121,026	294,372	376,560	199,430	21.63%	27.92%	(47.04%)	140.40%	1.61%
Dec	89,753	230,411	276,091	290,142	4.80%	19.83%	5.09%	144.95%	1.86%
<b>Year Total</b>	<b>1,634,147</b>	<b>3,573,468</b>	<b>3,929,960</b>	<b>4,002,917</b>	<b>26.75%</b>	<b>9.98%</b>	<b>1.86%</b>	<b>144.95%</b>	<b>1.86%</b>





# Sales & Use Tax (all components) Budget to Actual December 2018



# Questions?

